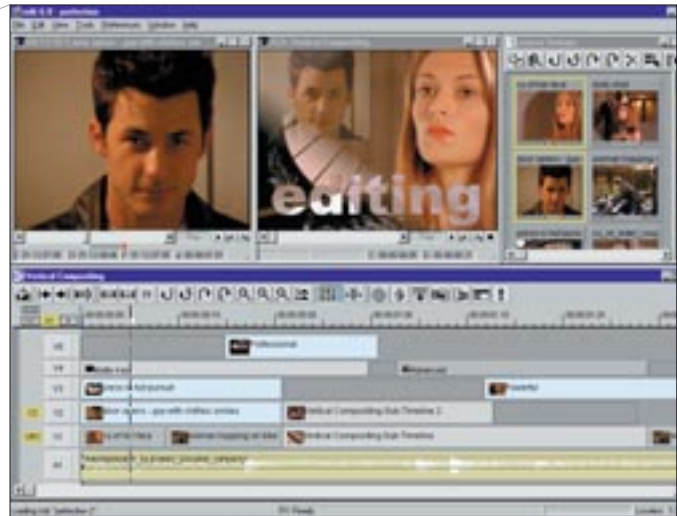


Now you have all the editing power needed in a non-linear editing system: fast trimming, slip, slide, replace, insert and overwrite as well as excellent media management capabilities for short- and long-format projects. With the **edit** non-linear editing system, you have all the speed needed from first cut to online utilizing the dual-processing, multi-threaded environment of Windows® 2000. **edit** offers all the graphics and effects power needed on the desktop with real-time keyframed motion effects, and instant access to **combustion™**, Discreet's desktop compositing solution with world-renowned tracking, image stabilization, paint and color correction tools.

edit's sophisticated multi-layer timeline uses full alpha pass-through between layers for vertical editing, sophisticated keyframe editing, and 48 real-time audio tracks for mixing – making **edit** the perfect non-linear application for broadcast, corporate, and multimedia projects. Fast timeline editing. Advanced effects and audio. **combustion** integration. All this and more, with support for broadcast-quality non-compressed images.

With **edit 6.5**, you get dual streams of non-compressed video with non-compressed graphic overlays, made possible by video processing hardware built for tomorrow's demands but available to you today. What are you waiting for? Make the switch to a faster, feature-rich, professional tool and leave the cost behind.



features

- Support for Pinnacle Systems® Targa 3000® video hardware
- Real-time dual streams of true non-compressed video
- Real-time non-compressed titles and graphic overlays
- 48 real-time audio tracks
- Instant access to Discreet keying, image stabilization and color correction using direct timeline access to **combustion**
- Sophisticated 99 layer vertical editing with nested timelines
- Integrated **edit slipstream™** web authoring, publishing and streaming
- Advanced multi-cam capabilities
- Stand-alone logger application
- Enhanced Project Transfers with **smoke®** and **fire®**
- Optional workgroup editing with **jobnet™** SAN configurations
- **jobnet™** pro/producer two-seat meta-data sharing solution comes standard

capture and output

- True non-compressed standard-definition video (PAL, NTSC)
- Support for variable rate compression for long-format offline projects
- 4:3 and 16:9 software selectable
- 48 KHz audio
- 2 and 4 channel audio I/O options depending on break-out-box
- Ability to set input/output audio levels
- Stand-alone logging software
- Add handles or "margins" to logged clips
- Import and capture from Avid-ALE and Evertz log files
- Manually capture clips with deck control
- Capture from in and out points
- Capture open-ended clips
- Create subclips on the fly
- Batch capture clips
- Capture video and audio directly to the timeline
- Print to tape with bars and tone generation or custom slate
- Insert or assemble edit mode
- Print an entire timeline or a region
- Add trailer black at end
- Supports Louth protocol for recording to a digital disk recorder

editing

- Real-time non-linear editing with fast, intuitive user interface
- Dual view with source/record style editing interface
- 2 real-time streams of non-compressed or compressed video editing with 4 channel audio I/O
- 1 real-time non-compressed Animatable Graphics channel
- 1 real-time non-compressed Animatable Logo channel
- Multiple graphics channels over dual-stream video effects
- Play, shuttle, jog, gang, step and loop play through clips and timeline using mouse, keyboard or JLCoooper MCS-3
- Insert, overwrite, and replace edits
- 3-point editing and fit-to-fill
- Back-timed edits from source or record side
- Cut, copy and paste timeline segments, reverse paste
- Trim via trim mode using keyboard or jogging
- Trim by dragging in the timeline
- Trim out black
- Trim audio and video split edits
- Four image display slip and slide mode
- Source and timeline slipping of I/O points
- Editable picons for rapid drag-and-drop editing with snap control
- Looped playback based on in and out points
- Unlimited undo and redo
- Mappable keyboard for hotkey editing
- Advanced multi-camera with audio synchronization capabilities include simultaneous 4-source playback (~30fps) or simultaneous 9-source playback (~15fps)
- Sync setting for adding filler on tracks to maintain sync
- Visual timeline numeric and color indicator to detect out-of-sync clips
- Pre-cue of timeline cursor after trimming
- Selective field display for scrubbing and still frame
- Gang sync editing: lock timeline to multiple clips in a bin for editing
- "Recently viewed clips" listing in source viewer
- Source side match frame to timeline, timeline match frame to source
- Split pane timeline for simultaneous viewing of two different timeline sections
- Multiple timelines open at once

editing (continued)

- Split event to add an edit within a timeline segment
- Combine split events

audio

- Real-time monitoring and editing of 48 tracks, with a total of 500 tracks available
- Auto sub-frame "soft cuts" for smooth audio cuts
- Audio waveform display per timeline event
- Rubber band style audio level and pan control
- Real-time audio mixing
- Track groups for controlling multiple audio tracks with one slider
- VST audio plug-in support
- Real-time EQ
- Real-time compression
- Real-time delay, phalange and phaser
- Output LTC via audio track
- Audio mute/solo controls during playback
- AIFF Audio support
- Real-time audio equalization (parametric EQ)
- Extended audio plug-ins (VST)

real-time effects and vertical editing

- Unlimited vertical editing and effects creation
- Real-time transitions, color correction and keying
- Real-time resizes and 2D DVEs
- Automatic alpha key support on all video tracks for multiple timeline layers of compositing
- Advanced keyframe editor with linear, ease in/out and Bezier graph editing
- Cut-copy-paste keyframe curves
- Nested sub-timelines for sophisticated vertical editing
- Trace capability for copying and pasting effect settings
- Save effects for reuse in different projects
- Solo/mute of multiple video and audio tracks
- Transparent black clips available for transition video effects
- Real-time non-compressed alpha keyed titles and graphics
- Integration with **combustion** directly from the edit timeline or bin
- In-context "scrub" interaction of all layers of compositions without rendering
- Real-time speed changes: fast, slow, reverse and strobe
- Real-time timewarps with Bezier keyframe control
- Vertical dynamic motion control for no vertical shifting on slo-mos
- Real-time frame blending for smooth motion
- Third-party plug-in support
- Includes bundled Boris FX 6.0
- Use Adobe® After Effects plug-ins in the timeline via Boris FX 6.0
- Natural particle effects including snow, rain, fire and sparks

titling

- Rolls, crawls and real-time slates
- Keyframe animation of text
- Full TrueType font support
- Fully anti-aliased text with soft drop shadows
- Kerning, leading, slant and rotation control
- Color, gradient and texture mapping
- Preset and user-defined style sheets
- Multi-language support
- Set text on a spline
- Rectangles, ovals and spline shape tools

streaming media encoding & publishing

- Fully integrated **edit slipstream** encoding, publishing and streaming
- Multi-processing, multi-threaded architecture expedites encoding process
- Export video to a targeted publishing page complete with searchable and password-protected **edit slipstream** database
- Encode video in a variety of streaming formats including:
 - QuickTime® and Microsoft® ASF (Windows Media Player)
- Complete content creation, publishing and distribution capabilities including integrated asset management database, asset management tools, active server page scripts, and server-side support (Microsoft Media ASF formats)
- Automated FTP capabilities enable system-triggered transfer of web video to internal or external sites
- Preview web video based on encoding parameters before encoding to reduce time and optimize quality
- Publishing occurs as a batch and background process, enabling additional editing work to be done on the **edit** workstation
- Design and save publishing templates for common encoding and publishing projects
- Export media to Discreet's **cleaner™ 5** for RealNetworks support and advanced encoding options

import/export

- AIFF and Wav audio
- AVI, Motion Jpeg, QuickTime
- MPEG-1 and MPEG-2 export
- Pixel aspect and scaling options
- Support for Alpha channel on import
- Sequential image file support
- Batch export multiple whole timelines or regions
- Detailed export status display
- Preview compression results before export

workflow & integration

- Includes **jobnet pro/producer** two-seat meta-data sharing solution between **edit** and laptops
- Timeline meta-data transfer to **smoke** or **fire** for enhanced first-cut to high-resolution finishing workflow
- Layered timelines with titles and effects in **edit** can be recreated in **smoke** or **fire**
- **combustion** color correction, keying and tracking data passed to **smoke** or **fire**
- **edit** 2D DVE position and scaling set-ups passed to **smoke** or **fire**
- Extract alpha channel from QuickTime files as a separate matte layer for use in compositing
- Titles designed in **edit** regenerate in the **smoke** or **fire** text module, including font, size, X, Y, animation, and transparency
- Transfer audio patching with correct I/O channel assignments, audio pan, level, and cross dissolves from **edit** to **smoke** or **fire**
- Use advanced Discreet tracking, keying and color correction via integrated **combustion** software launched from within the **edit** timeline
- **edit**-designed real-time effects pass through into **combustion** for advanced 2D/3D compositing
- Ability to interact with **edit** timeline while compositing in **combustion**
- Remappable keyboard hot keys
- Support for JLCooper MCS-3
- Contextual menus for fast access to common functions

workflow & integration (continued)

- Custom user interface layout
- EDL import and export including CMX, GVG and Sony
- EDL pre-read support
- Meta-data sharing with Thomson Nexstore

bin and project management

- Unlimited bins with picon and list views
- Contextual bin undo/redo functions
- Free-form storyboard editing
- Play and edit picons from a bin
- Full bin sort and Boolean search functions
- Bin modify function for updating information on multiple clips at once
- Capture and editing functionality within a bin
- Sub-clipping from a single clip
- Search across bins
- Seek to source: find clips based on timecode for source display (Auto Match Frame)
- System-wide browsing of source material
- Copy bins and timelines from project to project
- User-defined text comments available on cue points in timeline for easier searches and enhanced integration with sound mixer
- Ability to create a new sync source from existing video and audio clip(s) with timecode trace back to the original sources
- Ability to use a timeline as a source clip for flexibility in versioning, compositing and creating complex programming
- Automated project meta-data backup and restore
- Drive info window displays detailed statistics per job
- Find used or unused media based on timelines, bins or entire jobs
- Delete unused rendered effects
- Relink media

supported video hardware

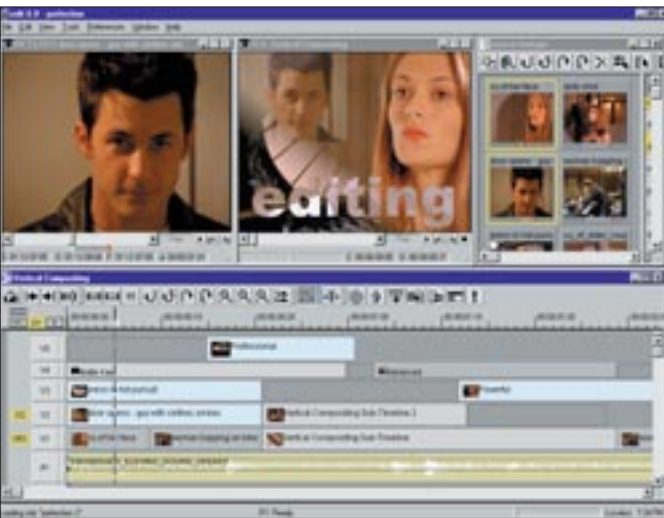
- Pinnacle/TARGA 3000
- Matrox G400 or G450 display card**

jobnet SAN features

- Share projects, bins, timelines, media, graphics and individual clips between **edit** workstations
- Storyboard editing feature allows for arrangement and sequential playback of clips with the ability to add comments to storyboards
- **jobnet producer** application delivers **jobnet** features to a laptop or desktop PC
- Log shots, storyboard rough cuts, playback and review for shot selection and timelines
- A floating license scheme allows unlimited installations of **jobnet producer** software
- Saves time and costs through efficient use of centralized storage arrays
- Supports scaleable custom configurations from 2 systems to 20 or more
- Supports **combustion** and **3ds max™** for creating a shared desktop facility

jobnet features are based on jobnet 3

** For more detailed and expanded hardware configurations and display options, please contact your local Discreet reseller or visit the **edit** certified systems area on the Discreet website: www.discreet.com



additional information

To obtain more information about Discreet systems and software visit the Discreet website at www.discreet.com or e-mail product_info@discreet.com

10 rue Duke, Montréal, Québec, Canada H3C 2L7

United States/Canada call 1.800.869.3504 International call 514.393.1616

Contact your local reseller for sales information. Resellers are listed on the Discreet website at www.discreet.com

Product information and specifications are subject to change without notice. This publication may include inadvertent technical inaccuracies or typographical errors. Autodesk, Inc./ Discreet Logic Inc. provides this information "as is," without warranty of any kind, either express or implied, including any implied warranties of merchantability or fitness for a particular purpose (This exclusion may not apply to you as some jurisdictions do not allow the exclusion of implied warranties).

Discreet is a division of Autodesk, Inc. Discreet, 3ds max, cleaner, combustion, edit slipstream, fire, jobnet, jobnet pro, jobnet producer and smoke are either registered trademarks or trademarks of Autodesk Inc./ Discreet Logic Inc., in the U.S.A. and/or other countries. All other brand names, product names, or trademarks belong to their respective holders. © Copyright 2001 Autodesk, Inc. All rights reserved. 11/2001